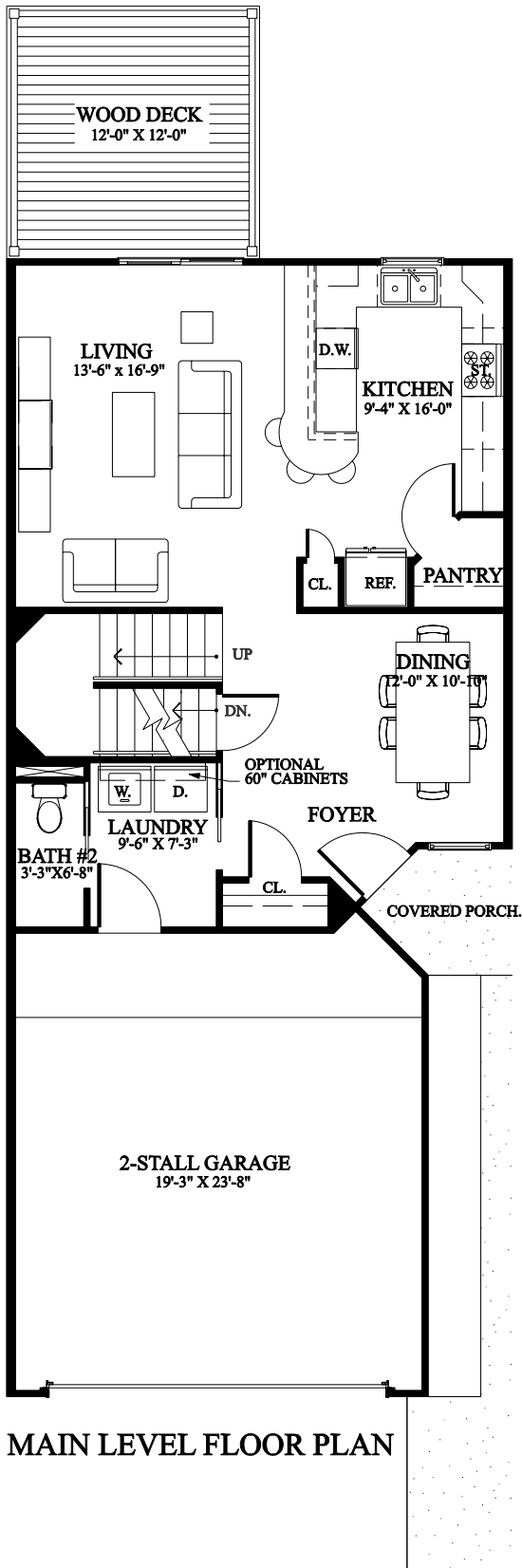
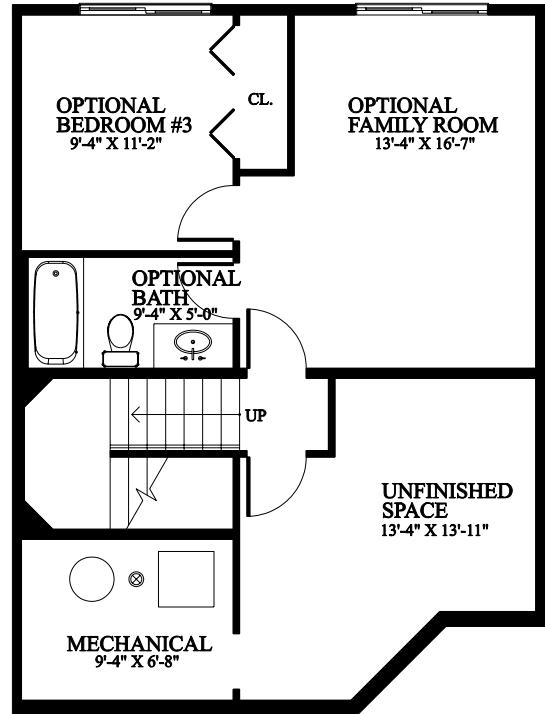


"RED STEM" CARRIAGE HOUSE

MAIN LEVEL = 742 SQ. FT.
 UPPER LEVEL = 685 SQ. FT.
 TOTAL APPROXIMATE = 1,427 SQ. FT. *



MAIN LEVEL FLOOR PLAN



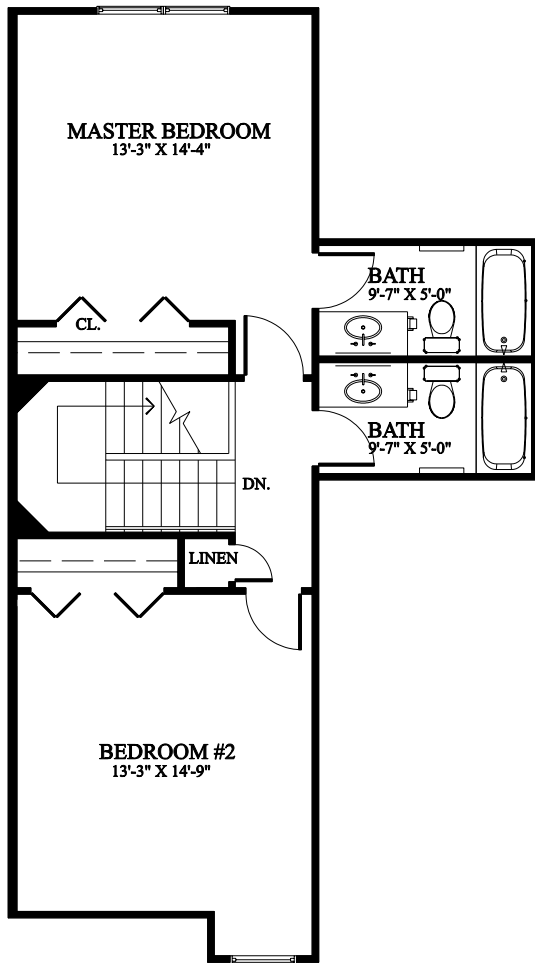
LOWER LEVEL FLOOR PLAN
 (WITH OPTIONAL FINISHES SHOWN)
 698 SQ. FT. - FUTURE EXPANSION

- 1427 Above Grade Square Footage
- Interior Unit Only
- 2 Bedrooms
- 1 ½ Baths
- Main Floor Laundry
- Optional 2nd Bath Upstairs
- Snack Bar
- Walk-in pantry

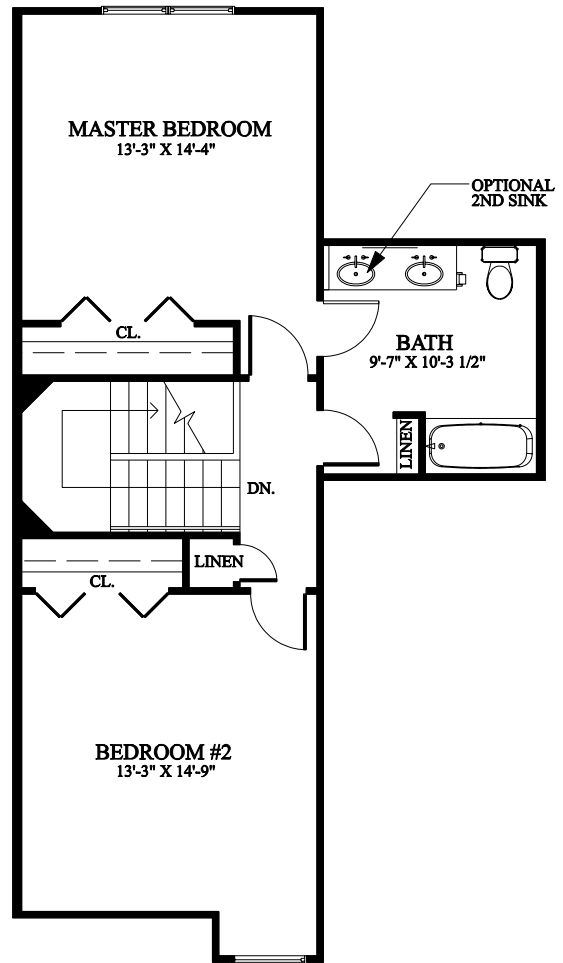


"RED STEM" CARRIAGE HOUSE

MAIN LEVEL = 742 SQ. FT.
UPPER LEVEL = 685 SQ. FT.
TOTAL APPROXIMATE = 1,427 SQ. FT. *



UPPER LEVEL FLOOR PLAN
WITH OPTIONAL 2ND BATHROOM



UPPER LEVEL FLOOR PLAN
STANDARD

